

Elks Association Update

November 5, 2022



Thank you for  years
of service!

75 Years of Service



**Elks Traditions,
Relationships will Endure
and Expand**

Dr. George Collister Home

Initial location of Elks Convalescent Home for Children

For decades, the Elks Rehab System (now St. Luke's Rehabilitation Hospital) has impacted and faithfully served thousands of patients and their families.

As polio cases increased in 1947, visionary members of the BPOE, Boise Lodge #310 initiated a project to care for and treat children with polio.

The first site for the Elks Convalescent Home for Children was the 20-room mansion of Dr. George Collister.

Idaho polio outbreaks would soar above the national average in 1949, then start declining after 1954, when vaccines arrived.



Idaho Elks Rehabilitation Hospital



First hospital building (1957)

By 1957 the Polio vaccine was widely distributed, and the incidences of new outbreaks significantly declined. With that decline, the Elks began to shift their focus, opening a new site, renamed the Idaho Elks Rehabilitation Center. Its programs expanded to include the needs of adult patients with stroke, spinal cord injuries and cerebral palsy.

In the decades to follow, the Idaho Elks Rehabilitation Center would develop into the Idaho Elks Rehabilitation Hospital (its first building on the left), and then Elks Rehabilitation System, which included the hospital on Fort Street, Elks Hearing & Balance Center, and Elks Internal Medicine.

Idaho Elks and St. Luke's begin operating a joint venture in 1996 to provide premier outpatient therapy, including physical, occupational, speech and sports therapy, along with pediatric care.

Idaho Elks Rehabilitation Hospital

In 2001, the current hospital was built next to the old one, and across the street from St. Luke's main campus, expanding to 156,000 square feet.

St. Luke's and Idaho Elks again partnered in 2005, in Wound Care to care for patients with chronic, non-healing wounds.

In 2014, shifts in the needs of patients and the changing healthcare environment led the Elks to change its focus from the day-to-day operations, to supporting rehabilitation and therapy programs statewide through philanthropy. They chose St. Luke's to carry on the Elks tradition of excellence by operating the hospital and clinics.



Current building (2001)

St. Luke's Rehabilitation Hospital



Today, St. Luke's Rehabilitation Hospital is part of a network of integrated services, providing care throughout Idaho, and parts of Oregon, Wyoming, Utah, Montana and Nevada.

Facility Updates for Elks Medical Plaza I & II and Clinics

Clinical Equipment Upgrades



Nu Step Recumbent Bike



FES Bike



Patient Room and Common Area Furniture

- ✓ Ceiling Lifts – Patient movement
- ✓ Omnicell – medication dispensing
- ✓ Furniture – Common area & patient room seating, patient recliners
- ✓ Hill-Rom Beds & Mattress Replacement
- ✓ Bioness Vector Gait Training System



Omnicell Dispenser



Bioness Vector Gait Training System



Hill-Rom Bed & Mattresses



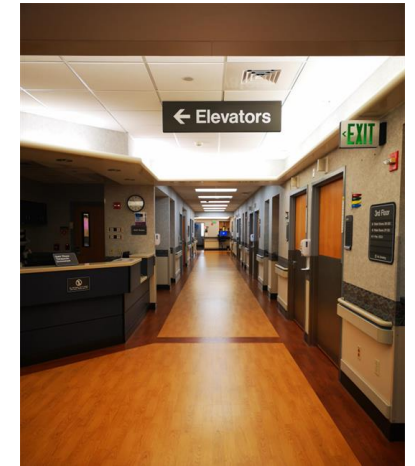
Liko Lift Image



Patient Care Computers

Facilities Space Upgrades

- ✓ Re-lamping light fixtures
- ✓ Patient Room Flooring Replacement
- ✓ 1st, 2nd & 3rd Floor Common area Flooring Replacement
- ✓ 1st Floor Pool Locker Room Remodel
- ✓ 1st Floor Adult Outpatient Clinic Remodel
- ✓ Pool Resurface & Refresh



Common Area
Flooring Replacement



Patient Room Flooring
Replacement



Common Area
Flooring Replacement



Pool Refresh

Facilities Equipment Upgrades

- ✓ HVAC Units
- ✓ Bollard Replacement
- ✓ Building HVAC Automation
- ✓ Re-lamping light fixtures



Transport Van



HVAC Unit
Replacement



HVAC Automation



Bollard Replacement

Physician / Clinic Suite Refresh

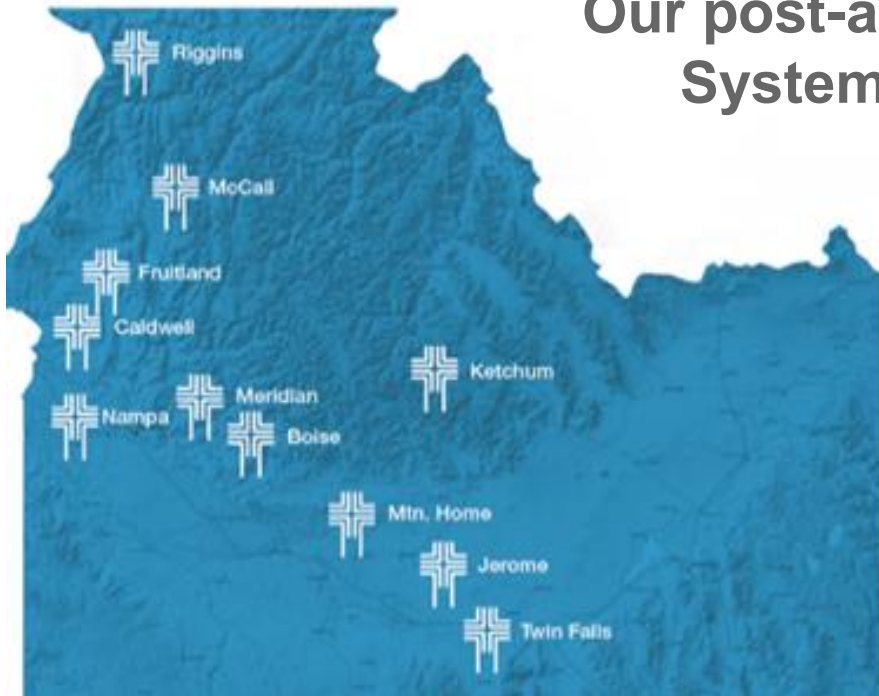
Hearing & Balance Refresh
IPM&R Conversion and Suite Refresh
1st Floor Ortho Suite Refresh
Rheumatology Refresh
Wound & Hyperbaric Refresh

- Installed new sinks, countertops, cabinetry, and flooring in exam rooms
- Office spaces updated with built-in desks
- Added data and electrical outlets where needed
- Relamped throughout



Quality Metrics

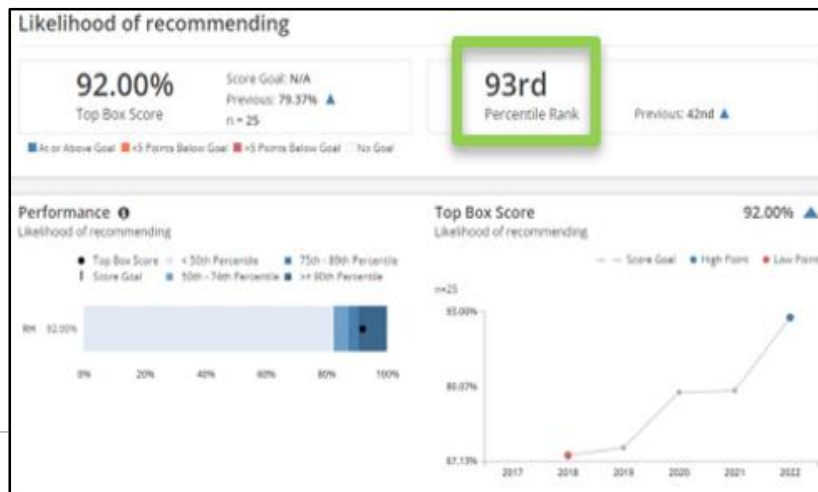
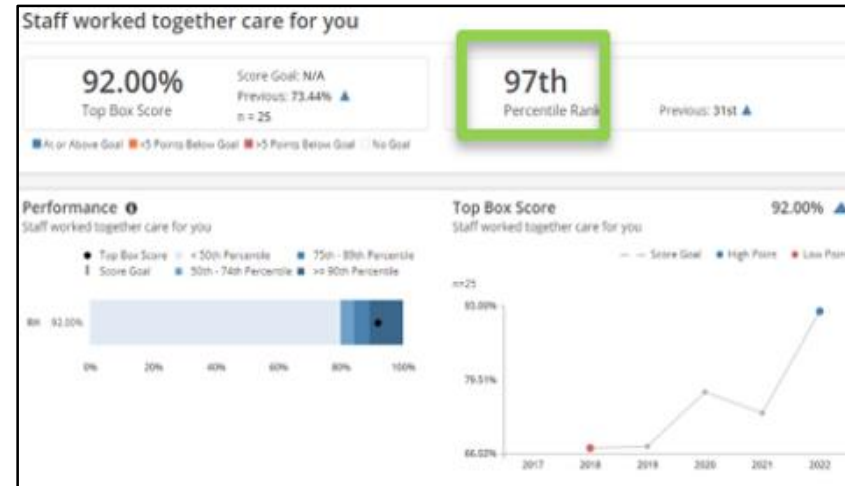
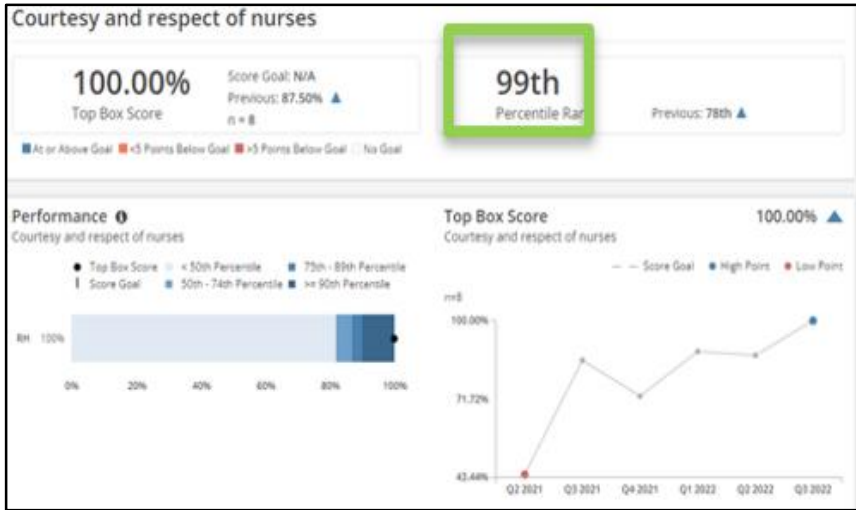
Our post-acute rehab locations mirror St. Luke's Health System's footprint, encompassing the following services:



- Inpatient acute rehab in Boise – 19 bed unit
 - Served over 400 patients in FY2022
 - 86.4% went back to the community (home/assisted living); national is 80.23%
 - Top 3 diagnosis: Stroke-41%, Brain Injury-18% and General Rehab/Medical-14%
- Subacute (SNF) Boise – 19 bed unit
 - Served almost 400 patients in FY2022
 - 89% went back to the community (home/assisted living); national is 52.7%
- Outpatient therapy clinics – 22
 - Over 160,000 Patient visits in FY2023
 - Functional improvement is in the 93rd percentile (nationally)*



Press Ganey – Patient Satisfaction



Leaders in Patient Satisfaction, Exceeding St. Luke's Target Goal!



Employee Engagement

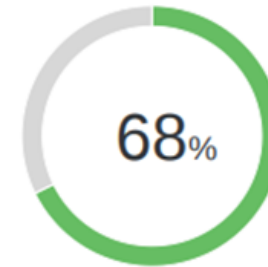
Your Leader Results

St. Luke's is committed to investing in our people so they are engaged and active participants in our mission. As part of this, we conduct the Employee Engagement Pulse Poll to:

1. Receive feedback about employee experiences.
2. Share leader results so leaders may focus on employee engagement and retention.
3. Measure the system's Culture Goal.

Please review your leader results for the 2021 Pulse Poll. Your leader results are the Distribution column. New in 2022, you will receive quantitative results for core questions as well as follow up questions, if the follow up question was multiple choice. Hover over the ⓘ to read more about the survey question or read the glossary of terms at the bottom of this page. For questions about your results, please contact your HR Business Partner.

Your Team's Response Rate ⓘ



Engagement Scores Exceed St. Luke's Target Goal!



Employee Engagement ⓘ

Question	Responses ▾	Distribution	System 2022 Census 1 Scores	St. Luke's Target Goal
How likely is it that you recommend St. Luke's as a great place to work to a friend/colleague?	348	85% 9% 5%	77%	76%
I intend to be working at St. Luke's two to three years from now.	342	79% 12% 9%	75%	76%
How likely is it that you recommend St. Luke's as a healthcare provider to a friend/family member?	342	87% 12%	85%	85%



Children's Pavilion

**December
2016**

Two years from bare
ground to occupancy



Children's Pavilion



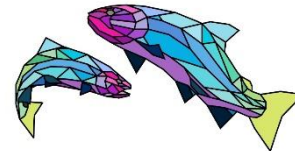
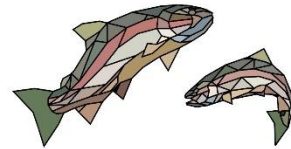
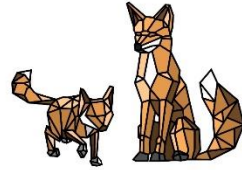
The NEW St. Luke's Children's Pavilion

100,000 sq ft

more than doubled the previous space!

- ★ The former Children's Specialty Center housed 17 providers representing 8 specialties.
- ★ The NEW Children's Pavilion houses 47 providers representing 16 specialties with room for additional growth.

Idaho Elks Children's Pavilion - Interior Design Concepts



“Building on our Promise to Children”

Artist rendering of the Children’s Pavilion



PEDIATRIC Medical Specialties:

- Pediatric Cardiology
- Pediatric Endocrinology
- Pediatric Gastroenterology
- Genetics/Metabolic Disease
- Pediatric Hematology/Oncology
- Pediatric Infectious Disease/Immunology
- Pediatric Nephrology

Pediatric Neurology

Pediatric Physiatry/Rehabilitation

Pediatric Physical Therapy

Pediatric Occupational Therapy

Pediatric Speech Therapy

Child and Adolescent Psychiatry

Psychology/Behavioral Health

Pediatric Neuropsychology

Developmental Pediatrics/Autism Clinic

Pediatric Pulmonology

Pediatric Radiology

Pediatric Respiratory Therapy

Pediatric Rheumatology

PEDIATRIC Surgical Specialties:

Pediatric Anesthesiology

Pediatric Dental Surgery

Craniofacial/Plastic Surgery

Pediatric ENT

Pediatric General Surgery

Pediatric Neurosurgery

Pediatric Ophthalmology

Pediatric Orthopedics

Pediatric Urology



A Year in the Life of St. Luke's Children's

Behind every statistic are real people, real families, and a lot of really amazing kids.

175

Pediatricians & Pediatric Subspecialists

3,438

Pediatric/PICU Hospital Patients



1,274

NICU
PATIENTS

1,000+

transports by helicopter, plane & ground



130K+

outpatient clinic visits

4,500+
surgeries

44,000+

Emergency Department Visits



7,700+
NEWBORNS





Thank you for 75
years of service. Your
legacy lives on in the
lives we touch!

Questions?